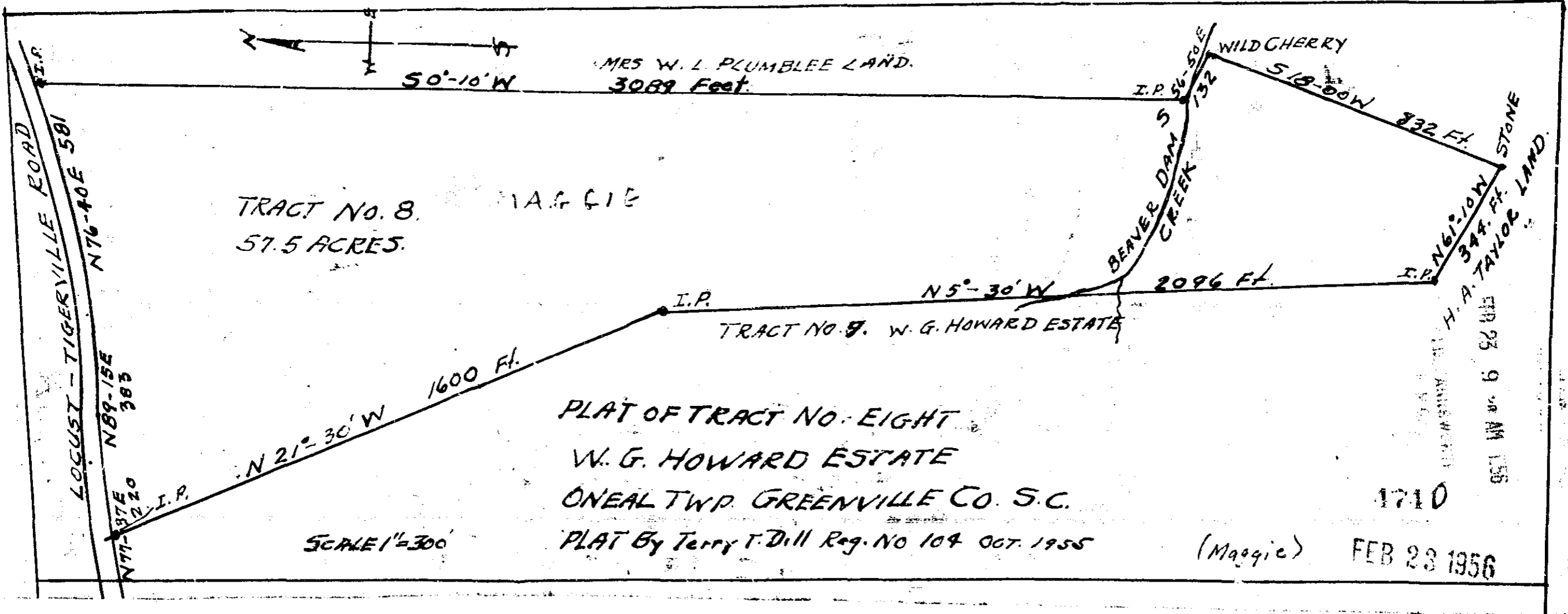


Plat Book - JJ - Page 145B



PLAT OF TRACT NO. EIGHT
 W. G. HOWARD ESTATE
 ONEAL TWP. GREENVILLE CO. S.C.
 PLAT By Terry T. Dill Reg. No 104 Oct. 1955

4740 Piled This 23 day of Feb 1956
 And Recorded in Vol. 9, Page 145 at 9:28 AM
 Allee Farms was the
 Register Messrs Commissioners Greenville County, S.C.